

Control4 Composer **Software**

QUICK GUIDE

Camera Installation

Thank you for using our network camera products. Our network camera products are integrated and developed for network video monitoring, including Storage Network Bullet, Wireless Storage Network Bullet, IR Network Dome, IR Network Weather-Proof Cameras and High-Speed Network Ball. High-performance single SOC chips are used in media processor for audio/video acquisition, compression and transmission/transfer. Standard H.264 encoding algorithm is applied to ensure clear and smooth video representation and transfer performance. Embedded Web Server offers users access to real-time surveillance and remote control of front-end camera through IE browser.

The network cameras are easy to install and operate. The network cameras are applicable to large and medium-size enterprises, governmental projects, large mall, chain supermarkets, intelligent buildings, hotels, Hospitals and schools and other group customers, as well as to applications requiring remote network video transmission and monitoring.

Instructions:

- For purpose of this manual, IP camera means network camera.
- Single click means a single click on the left mouse button.
- Double click means a double-click on the left mouse button.
- The unit comes with DHCP enabled so it will obtain its IP from the router.
- The default factory administrator user name for IP camera is admin (in lowercase), and no password (You are requested to create a password if you log in to the camera IP address via your browser.
- The default Web port number is 80 and the default media port number is 9988.

Statement:

Some information contained in this manual may differ from the actual product. For any problems you cannot solve using this manual, please contact our technical support or the authorized dealers. This manual may be subject change without prior notice.

Registration and Download

1. You will need to register with Control4 for an account. This account is needed for you to update and maintain your Home Controller with the latest Control4 software and apply any Control4 software licenses needed for expanded functionality.

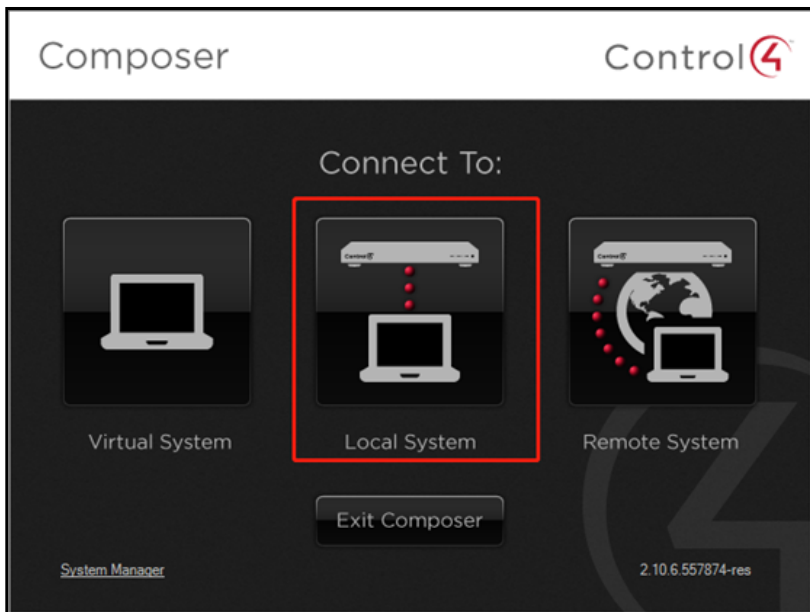
2. With the Control4 system, you will need different drivers for each piece of equipment that you are wanting to control. While you cannot directly download our drivers from Control4, we have been working directly with Control4 and have developed integration with Control4. You can ask our sales or support department for this driver to make AVYCON products accessible.

Running the software

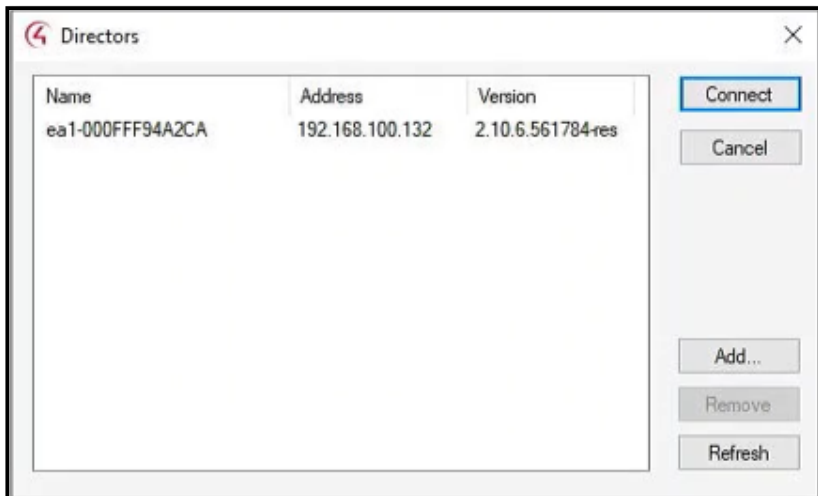
1. Composer

This is the main software that is used to update and maintain your Home Controller. With this software, you can update the driver and manage different devices. We have tested up to version 2.9.1.532307, though if you are using a version and are having compatibility issues, please let us know.

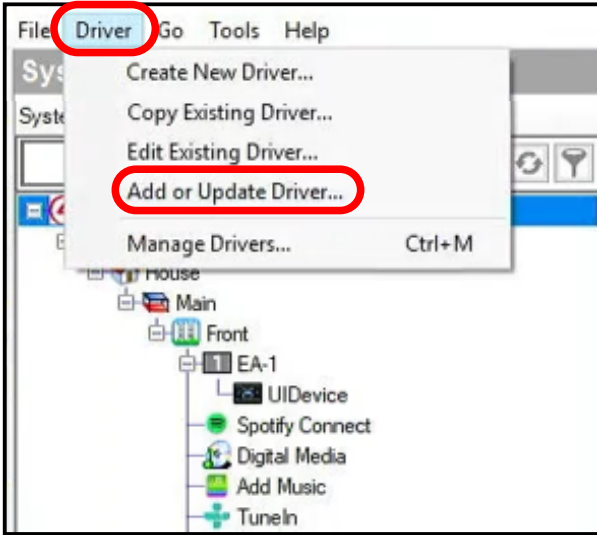
A. Double click the Control4 Composer, logging in with your account, and accessing the system, you will see the picture below. If you want to access the system for programming, please select **Local System** to access and modify the system programming.



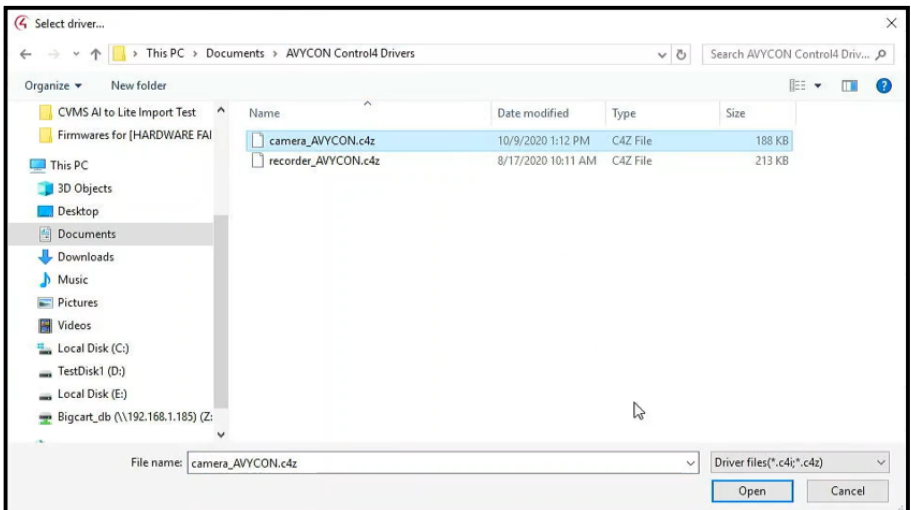
B. Select the correct Control4 hardware, then select **Connect**.



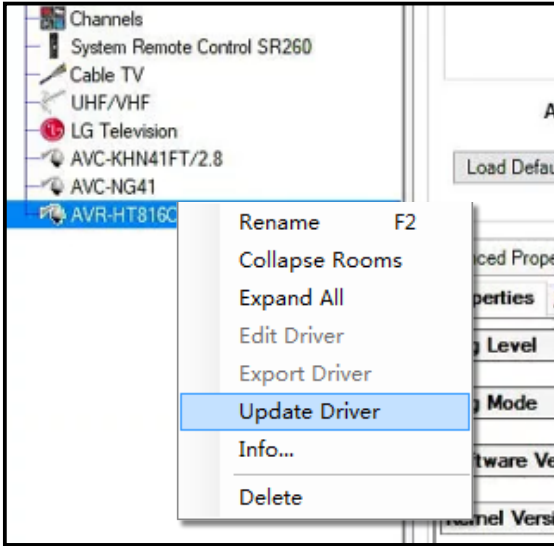
C. Click on **Driver**→**Add or Update Driver**. This is where you will input the driver files.



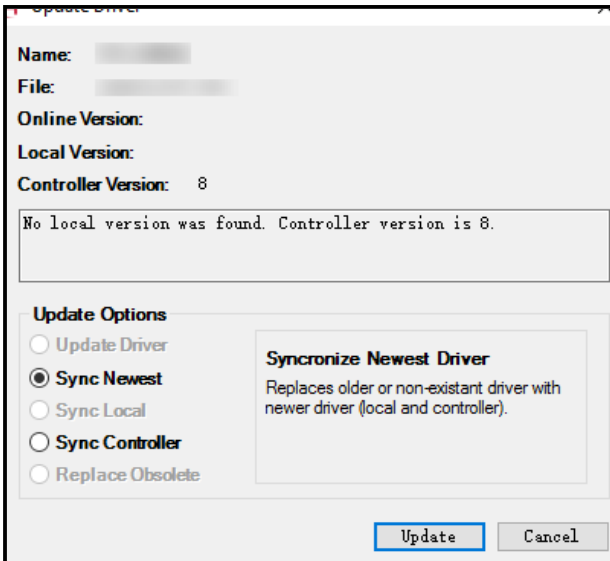
D. From the **Add or Update Driver** window, click on the correct driver and then select **Open**.



E. Right-click the driver you just added and then choose **Update...**



You should be shown some information about the driver in the next window. Just make sure **Sync Newest** is selected and then click on **Update**.

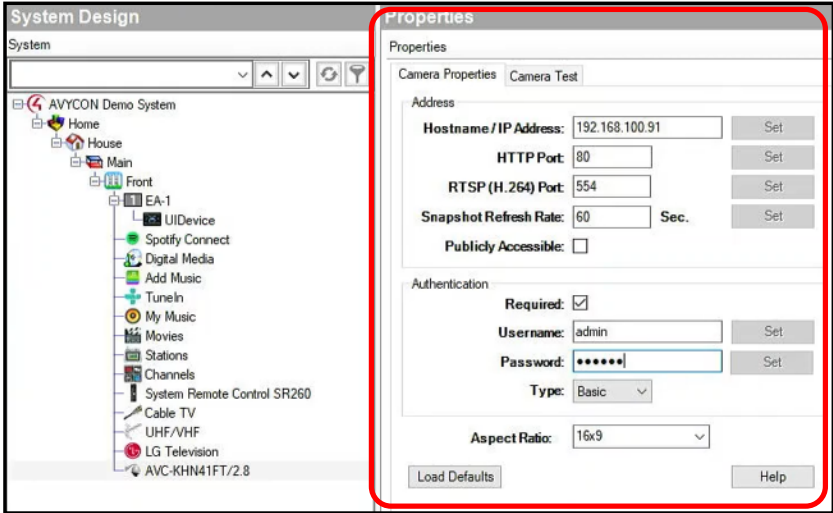


F. Back at the main interface, in the Search tab you can search for AVYCON and all AVYCON cameras added should appear.

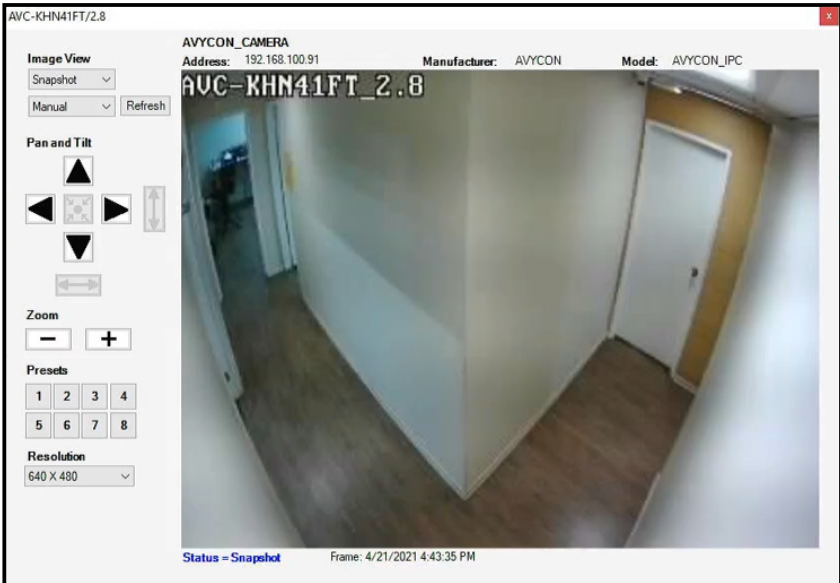
The screenshot shows the 'Items' search interface. At the top, there are tabs for 'Locations', 'Discovered', 'My Drivers', and 'Search'. The 'Search' tab is selected. Below the tabs is a search input field containing 'avycon'. Below the search field are several filters: 'Local' (checked), 'Online' (unchecked), and 'Certified Only' (unchecked). There are also dropdown menus for 'Category', 'Type', and 'Manufacturer', all set to '-- All ... --'. At the bottom of the filter section, there are 'Control Method' (set to 'All Methods') and 'Sort' (set to 'Relevance') dropdowns. The search results are displayed in a table-like format with three items:

AVYCON_RECORDER	AVYCON	8/17/2020 10:53 AM	Local
AVYCON_CAMERA	AVYCON	5/19/2017 5:48 PM	Local
Amazon Music	Control4	9/4/2019 10:45 AM	Local

Double click on the camera(s) you added, and you can configure the IP address and ports for each camera.



G. Input the correct camera information and double-click the camera to check if there was a successful connection.



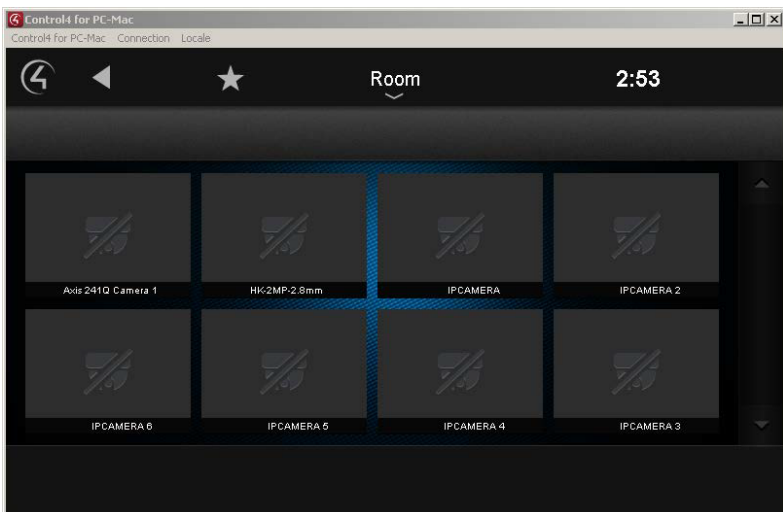
So here you finished you setting in you composer.

CMS for Control4

Below is the interface for Control4 CMS. From this screen, choose "Security"



From this menu, you can now access all cameras you have added.



AVYCON[®]



AVYCON[®]

Copyright © AVYCON. All rights reserved. Specifications and pricing are subject to change without notice.

phone: 949-752-7606

email: info@avycon.com

social: [@avycon_aivo](#)

website: avycon.com